

Drum Melting Units for Hot-Melt und PUR



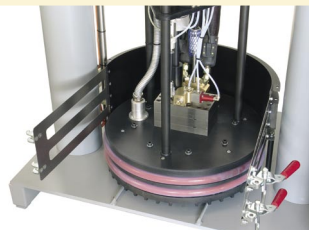
FS200 LC the standard design with Siemens Touch Panel TP170, gear pump ZP12-GZP50, for the use of 200 litre steel drums.



FS200 LX with interface, pneumatic controls and operating panel. The complete housing grants additional security.



FS20 for melting of Reactive- and Hot-Melt adhesives for 20 litre drums, unit complete housed.



Heating plate for fast and easy change. Drum fixing and centering device.



A steel safety cover of FS200 LX allows the use of card board drums as well.



Quality and precision for each single detail. Automatic ventilation by mechanic/pneumatic controlled valves.

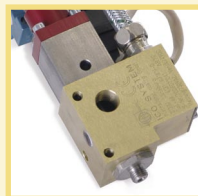


Analogue/digital screening of filling height level via sensor (optional), this prevents unintentional emptying of drum.

Original Accessories and Spare Parts



Stable sealing in 2 sizes



Various coating heads for multiple applications



Heating/Melting plates with different fins

Technical Data	FS200LC	FS200LX	FS20
Stamp/heating plate for quick change	•	•	•
Precision gear pump ZP12-GZP50	•	•	ZP12-ZP30
Speed of pump step less adjustable	•	•	•
Operation via Touch Panel Siemens TP170	•	•	•
Automatic ventilation of plante	•	•	•
Safety centering and fixing dvice of drum	•	•	•
Interface plug digital	•	•	•
Remote control for coating head	•	•	•
Pneumatic control of cylinder	•	•	•
Pump capacity kg/h*	100 - 220	100 - 220	20 - 40
Thermo Tracer FeKo, PT100	•	•	•
Stand-by-Function temperature control	•	•	•
Filling height screening via sensor	digital	analogue	analogue
Integrated drum pallet		•	
Completely housed		•	•
Heating capacity of stamp plate	22 KW	24 KW	4 KW
Temperature control units	3	4	4
Dimensions in mm	1410x800x1800/2700	1410x800x1800/2700	1200x800x1300/1600
Weight	approx. 600kg	approx. 750kg	approx. 400kg
Connection Voltage	3x400V/DC, 24V	3x400V/DC, 24V	3x400V/DC, 24V
Visualisation by Touch Panel TP270	optional	optional	optional

* Depending on temperature and type of hot melt

Stamp of agent



FS20 & FS200 LC/LX

Power and Intelligence

Units of the FS-Series are made for quick and easy supply of Hot-Melt- and PUR adhesives. Whether paper, textile, non-woven, fleece, film or for the automotive industry production. Because of its intelligent electronic control, the Melter can be easily integrated into existing lines. The safe and comfortable handling, the robust and reliable technique and more over the expansion possibilities are the perfect solutions for applications on highest standard.



The latest generation

The constructive requirements for drum melter are very high, as a robust mechanic, highest operation- and process security must be combined with intelligent control technique.

With our latest FS-Series, we have developed an innovative product, which grants optimal and individual adaptability for all solutions.

FS 200 LC/LX

The gear pump can be controlled by a direct reference value or by two digital inputs with preset reference revolutions. In addition a pressure control has been integrated. The pump revolution can be also controlled by an external guide voltage (0-10V).

The filling height indication is realized by an analogue displacement gauge. This enables a millimetre precise screening of filling height and therefore the report may indicate e.g. "drum almost empty". The filling height screening on the LC-Melter is handled with adjustable switching points.

The Drum Melter is controlled by Siemens SPS, Series 300. Programmable temperature control for all control zones. All control zones have a maximum and minimum temperature difference and an adjustable percentage value for the stand-by temperature.

The large number of optional and additional equipment means, the most effective solution for each different use; the intelligent electronic control offers further possibilities.

The **FS200 LX** offers a higher heating capacity, an additional temperature control and besides of being completely housed there are further options available. The integrated drum pallet eases the change of drums.

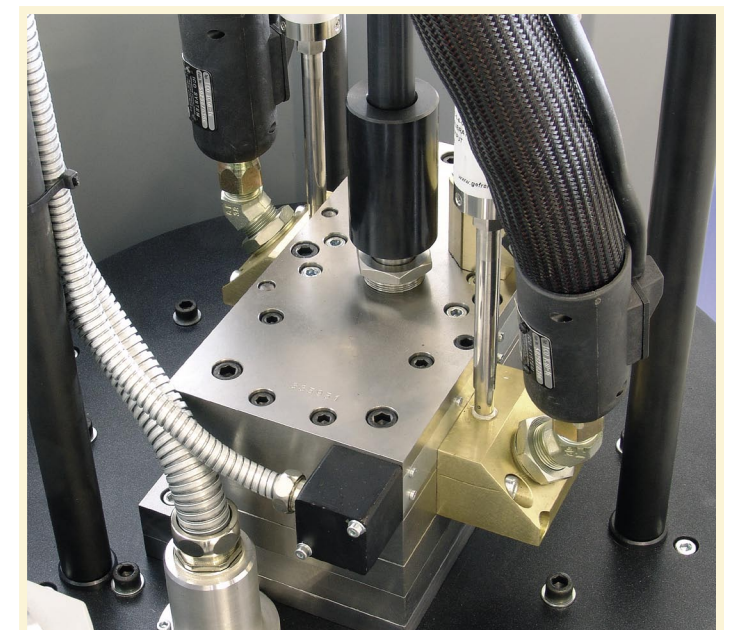
FS 20

Technically equipped as his big brothers, the FS 20 is ideal for melting of reactive adhesives (PUR etc.) in 20 litre drums.

Optional equipment

- Tandem control of two or more Melter, for continuous applications without interruption. During the supply process the other drum is prepared and can in case of need be switched in.
- Timer with week and day function
- Pressure control of pump (if not part of machine)
- Profi-Bus control switch
- Twin pump (for 200 litre Drum Melter only)
- Each pump can be controlled separately
- Visualization with Siemens 10" Touch Panel TP270
- Special designs possible

- 1 Steel safety cover for card board drums
- 2 Pneumatic control of cylinders
- 3 Standard Visualization by Siemens Touch Panel TP170
- 4 Stamp movement by two-hand operation
- 5 Coated stamp plate with up to 24 kW heating capacity



The optional twin pump system enables the supply for two coating heads from one drum only.

The pump revolution can be step less controlled via the Siemens Touch Panel.

X	FS20
	•
	ZP12-ZP30
	•
	•
	•
	•
	•
	•
	20-40 kg/h
	•
	•
	analogue
	•
	4 KW
	4
750	approx. 400
	kg
	optional

