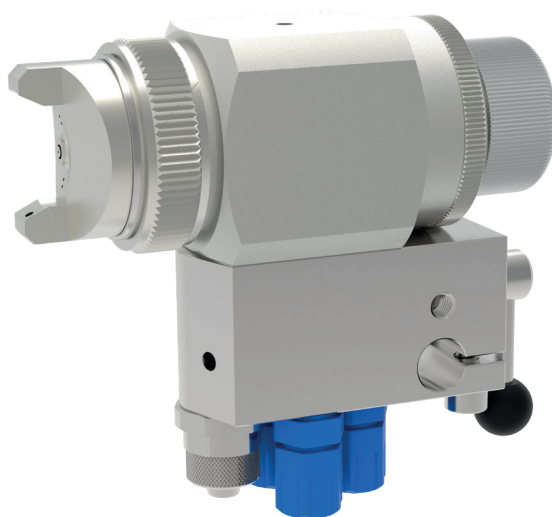


**Spray valve
GF/5 and GF/5 HVLP
with quick release adapter**

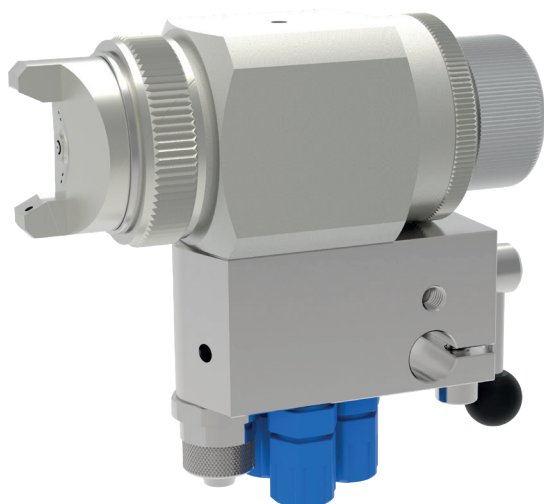


schütze
SPRAYTECHNOLOGY



Spray valve

GF/5 and GF/5 HVLP with quick release adapter



The sprayvalves of series GF/5 with quick release adapter are designed for spraying paints, colours, release agents, oils and other fluids. Depending on viscosity of fluid different nozzle sizes are available. Depending on position of regulation of spray jet, this valve sprays from round- to flatspray.

The special of the series GF/5 is the possibility to change the spray valve within seconds without disconnecting or dismantling the hoses for air and fluid. Interruptions of work are reduced to a minimum.

The quick release adapter should be connected with the machine/robot. Only by turning a release handle the complete spray valve can be removed. The material supply is automatically stopped.

In version GF/5 HVLP also available with less overspray.

- available nozzle dimensions:
ø 0.3 / 0.5 / 0.8 / 1.0 / 1.2 / 1.4 / 1.5 / 1.7 / 2.0 / 2.5 / 3.0 / 3.5 mm
- with ratchet regulator for easy adjusting amount of fluid.
- continuously adjustable regulation of spray jet from
- round- to flat spray by external air pressure regulators.

Technical data:

Material pressure:	max. 10 bar
Control air pressure:	3 - 6 bar
Atomizing air pressure:	as required
Measurements:	100 x 56 x 40 mm (without adapter)
Weight:	approx. 400 g (without adapter)
Valve body:	aluminium, chemically nickel plated
Nozzle + needle:	stainless steel

Special designs on request.
Technical alterations reserved.
For further information please contact us.