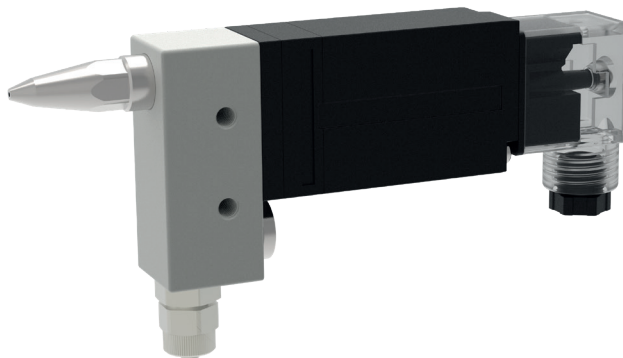
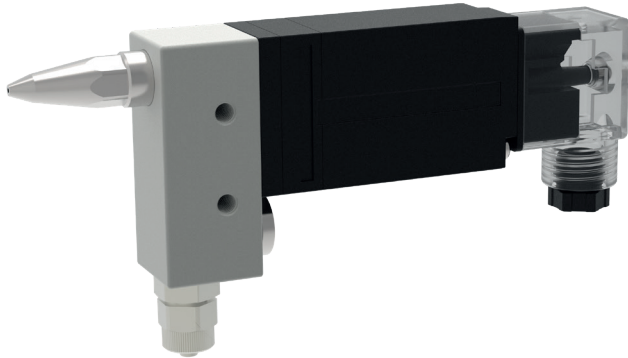


EDV electric dispensing valve



schütze
SPRAYTECHNOLOGY





The EDV dispensing valve is an electronically controlled applicator for the processing of materials such as sealants, adhesives, greases, paints, oils and many other media. The dispensing process can be carried out as either an intermittent or continuous process.

The device is controlled using the integrated 2/2-way rocker valve. The dispensing valve is opened and the spraying process starts when the rocker valve receives a signal. When the rocker valve no longer receives the signal, the valve closes again and thus interrupts the dispensing of material.

- Available nozzle sizes:
ø 1.0 / 1.2 / 1.5 / 1.8 / 2.0 mm
- The material connection can be straight or angled, and attached below or to the rear.
- Optionally available with clamp

Technical data:

Dimensions:	146.5 x 22 x 72 mm
Weight:	360 g
Material pressure:	max. 3 bar
Switching frequency:	max. 20 Hz
Power supply:	24 V

Special designs on request.
Technical alterations reserved.
For further information please contact us.