

# SERIES F20

## Rotary transmission leadthroughs

single  
double  
triple  
rotary transmission leadthroughs –  
manifold



### Application

#### Rotary transmission leadthroughs

are used in all applications where a medium, e.g. compressed air has to be fed into a rotating machine element. You can insert up to three independantly acting tubes into a the central shaft of a rotating machine element.

These rotary transmission leadthroughs have manifold fields of application. They are used for example with textile machines, transfer machines, robots, rotary mounting desks etc.

### Technical Data

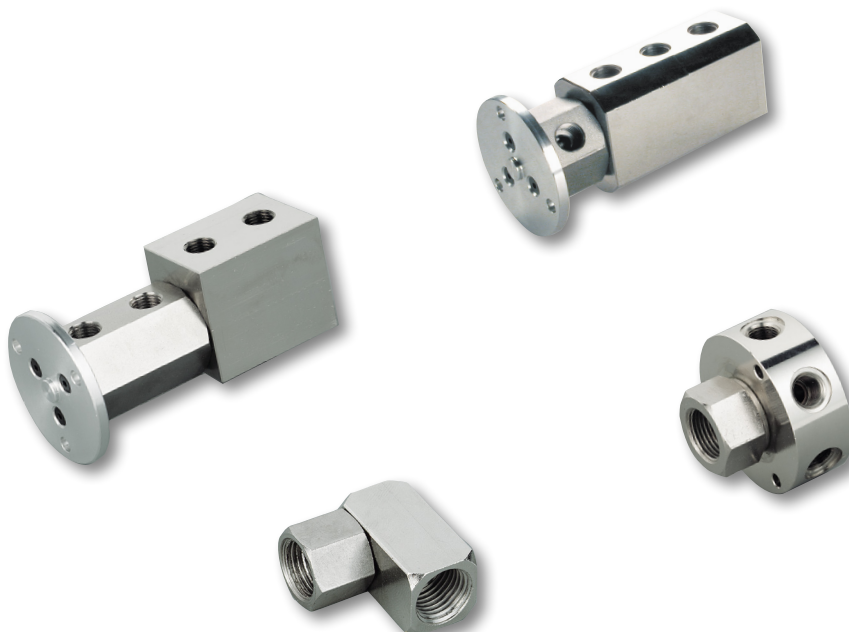
The technical data as well as the application field are attributed to the respective article in the catalogue.

**Field of application:** typical pneumatic applications

### Assembly

- The compressed air connection can be mounted on both sides.
- In case of the application in vacuum the sealings are inserted reversely
- For applications with special pressure and temperature ranges please make a special request.

F20



**Application:** These rotary transmission leadthroughs are used in all applications where a medium, e.g. compressed air has to be fed into a rotating machine element. You can insert up to three independantly acting tubes into the central shaft of a rotating machine element. Rotary transmission leadthroughs have manifold fields of application. They are used for example with textile machines, transfer machines, robots, rotary mounting desks etc.

### Technical data

maximum operating pressure	:	12 bar, other pressure ranges on request
temperature range	:	-10°C to +85°C standard type
medium	:	lubricated compressed air, other media on request
maximum rotary speed	:	see table
connections	:	see table
fl ow rate	:	on request
cross section opening	:	see table
fl ow direction	:	both sides possible
main air connection	:	possible on both sides

### Different versions of all rotary leadthroughs are available on request!

- with the vacuum rotary leadthroughs the sealings are mounted reversely
- rotary leadthroughs with FKM sealings are available on request

### Materials

1 seeger circlip ring	:	steel	5 bolt	:	steel
2 lip sealing	:	NBR	6 flanged screw	:	steel
3 housing	:	brass	7 flanch	:	aluminium
4 guide pin	:	steel			

### Rotary leadthrough - straight

1 x main air inlet, 1 x main air outlet



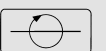
order-no.	type	inlet	outlet	max. rotary speed in 1/min	VPE
12860069	F-DDG10-1/8	1/8"	1/8"	550	1
12860068	F-DDG10-1/4	1/4"	1/4"	550	1
12860070	F-DDG10-3/8	3/8"	3/8"	550	1
12860071	F-DDG10-1/2	1/2"	1/2"	550	1

### Dimensions

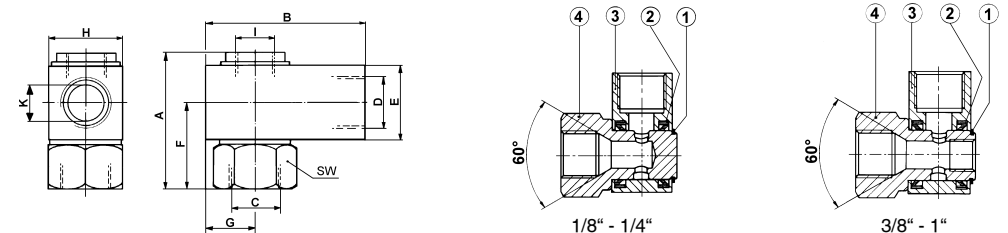
type	A	B	C	D	E	F	G	H	CH1	CH2
F-DDG10-1/8	1/4"	1/4"	47	39	16,5	19,0	8,0	8	17	14
F-DDG10-1/4	1/8"	1/8"	54	43	16,5	23,0	11,0	16	17	17
F-DDG10-3/8	3/8"	3/8"	62	50	23,5	26,5	12,0	25	24	22
F-DDG10-1/2	1/2"	1/2"	67	52	23,5	28,0	15,0	40	24	24

### Rotary leadthrough - straight

1 x main air inlet, 1 x main air outlet



order-no.	type	inlet	outlet	max. rotary speed speed in 1/min	DN	VPE
12860050	F-DD10-1/8	1/8"	1/8"	550	5	1
12860051	F-DD10-1/4	1/4"	1/4"	550	5	1
12860052	F-DD10-3/8	3/8"	3/8"	300	8	1
12860053	F-DD10-1/2	1/2"	1/2"	200	11	1
12860054	F-DD10-3/4	3/4"	3/4"	160	15	1
12860055	F-DD10-1	1"	1"	140	18	1



### Dimensions

type	K	A	B	C	D	E	F	G	H	I	SW
F-DD10-1/8	4,0	32	30	G 1/8	G 1/8	16	22,0	8,0	16	-	16
F-DD10-1/4	4,0	32	30	G 1/4	G 1/4	16	22,0	8,0	16	-	16
F-DD10-3/8	8,5	39	40	G 3/8	G 3/8	20	26,0	12,5	25	G 1/8	24
F-DD10-1/2	12,0	55	64	G 1/2	G 1/2	30	35,0	20,0	40	G 3/8	24
F-DD10-3/4	20,0	70	65	G 3/4	G 3/4	40	45,0	20,0	40	G 1/2	36
F-DD10-1	24,5	80	80	G 1	G 1	45	52,5	26,0	50	G 3/4	45

# Rotary transmission leadthroughs

for air and vacuum (attention: with vacuum, the sealings must be reversed.)

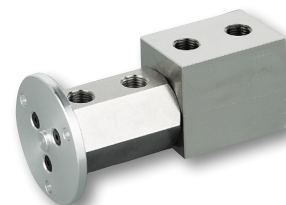
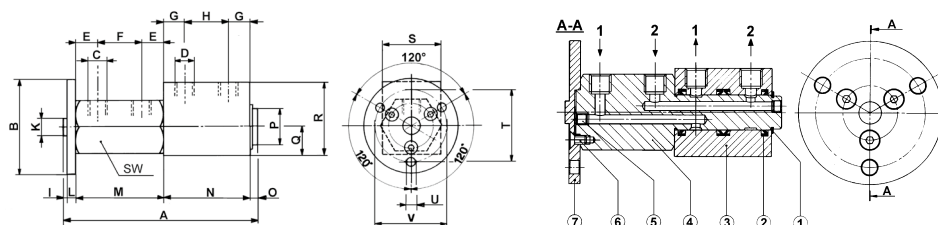
## Series F20

### Rotary leadthrough - double

2 separated main air inlets, 2 separated main air outlets



order-no.	type	inlet	outlet	max. rotary speed in 1/min	DN	VPE
12860120	F-DD20-1/8	2 x 1/8"	2 x 1/8"	300	4	1
12860121	F-DD20-1/4	2 x 1/4"	2 x 1/4"	200	8	1



### Dimensions

type	A	B	C	D	E	F	G	H	I	K	L	M	N	O	P	Q	R	S	T	U	V	SW
F-DD20-1/8	97,5	62,5	G1/8	G1/8	11,5	20	12	20	2	10	5	43	44	3,5	15	20	40	25	50	6,25	50	30
F-DD20-1/4	132	62,5	G1/4	G1/4	15	30	16,5	27	2	10	5	60	60	5,0	25	25	50	40	50	6,25	50	36

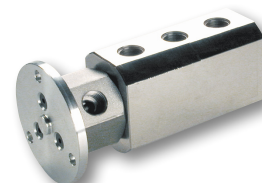
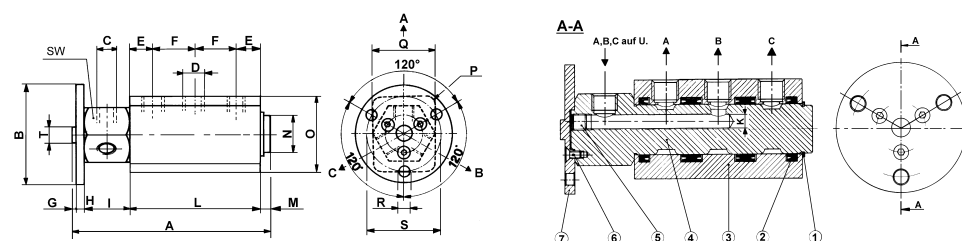
F20

### Rotary leadthrough - distributor

3 separated main air inlets, 3 separated main air outlets



order-no.	type	inlet	outlet	max. rotary speed in 1/min	DN	VPE
12860140	F-DD30-1/4	3 x 1/4"	3 x 1/4"	200	8	1



### Dimensions

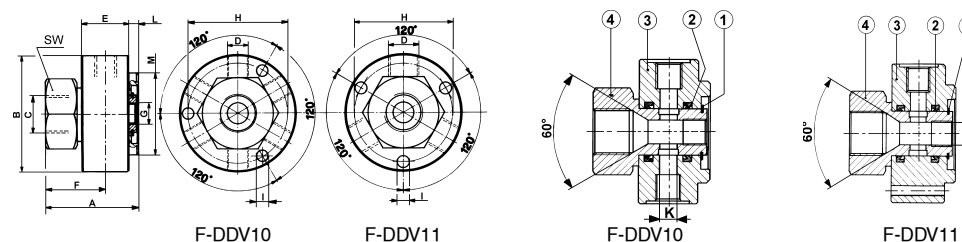
A	B	C	D	E	F	G	H	I	L	M	N	O	P	Q	R	S	T	K	SW
127,5	65	G1/4	G1/4	16	27	2	5	30	86	5	24,5	50	54	40	6,25	50	10	7,0	36

### Rotary leadthrough - distributor

3 separated main air inlets, 3 respect. 6 separated main air outlets



order-no.	type	inlet	outlet	max. rotary speed in 1/min	DN	VPE
12860100	F-DDV10-3/8-6x1/8	3/8"	6 x 1/8"	300	8	1
12860101	F-DDV11-3/8-3x1/4	3/8"	3 x 1/4"	300	8	1



### Dimensions

type	A	B	C	D	E	F	G	H	I	L	M	SW	K
F-DDV10	40	50	G 3/8	G 1/8	20	26	G 1/8	42	4,25	4	35	24	8,5
F-DDV11	40	50	G 3/8	G 1/4	20	26	G 1/8	42	4,25	4	35	24	8,5